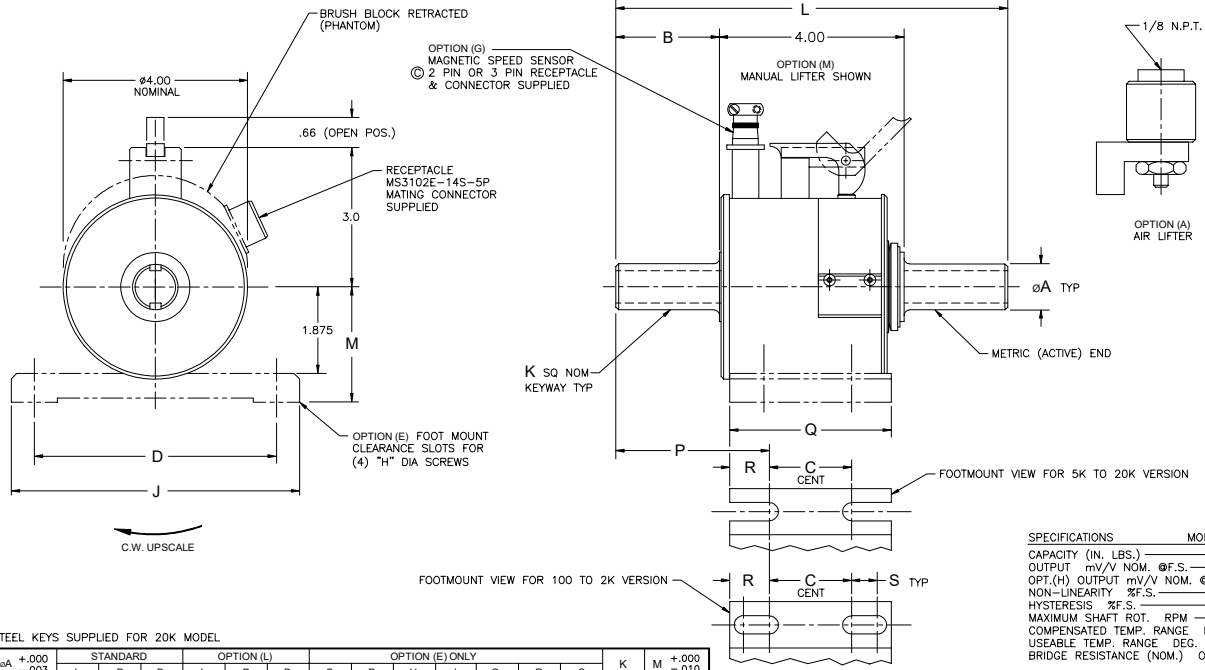


REV	DESCRIPTION	BY	DATE	CHK	ENG	REL	DATE
A	REVISED TO DETAILS	GMCIIT-12-20	DS	TS			12-23-88
B	ADDED 20K TO CHART	125 (1-25-87)	DMK	DMK			1-17-87
C	3 PIN RECEPTACLE & CONNECTOR ADDED	GMCIIT-21-01	DS	DS			12-17-81
	2 PIN & 3 PIN CODES ADDED						
D	FOOTMOUNT SLOTS REVISED	GMCIIT-31-01					12-6-83



C.W. UPSCALE

ALLOY STEEL KEYS SUPPLIED FOR 20K MODEL

MODEL NO.	øA +.000 -.003	STANDARD			OPTION (L)			OPTION (E) ONLY										K	M	+.000 -.010
		L	P	B	L	P	B	C	D	H	J	Q	R	S						
01100-100	.750	8.50	3.32	2.25	10.00	4.07	3.00	1.56	4.000	1/4	4.75	3.28	.86	.62	3/16	2.125				
01100-200																				
01100-500	1.000	9.50	3.70	2.75	12.75	5.33	4.38	2.02	5.250	3/8	6.25	3.50	0.74	OMT	3/8	2.500				
01100-1K																				
01100-2K	1.500	9.50	3.70	2.75	12.75	5.33	4.38	2.02	5.250	3/8	6.25	3.50	0.74	OMT	3/8	2.500				
01100-5K																				
01100-10K	1.500	9.50	3.70	2.75	12.75	5.33	4.38	2.02	5.250	3/8	6.25	3.50	0.74	OMT	3/8	2.500				
01100-20K																				

SPECIFICATIONS MODEL: 01100-XXX-CXXXX

CAPACITY (IN. LBS.)	100 TO 20000
OUTPUT mV/V NOM. @F.S.	2.0
OPT.(H) OUTPUT mV/V NOM. @F.S.	5.0
NON-LINEARITY %F.S.	.10
HYSTERESIS %F.S.	.10
MAXIMUM SHAFT ROT. RPM	6000
COMPENSATED TEMP. RANGE DEG. F	-70 TO 170
USEABLE TEMP. RANGE DEG. F	-65 TO 225
BRIDGE RESISTANCE (NOM.) OHM	350

ASSEMBLY DWG REF: 1666900-\*  
\*INDICATES CURRENT REV

INSTALLATION		SCALE NONE	
MODEL: 01100-XXX-CXXXX	FRSL: ENG: -	DATE: 5-4-87	DRAWN BY: KEMP
MATERIAL: -	BY: DATE	DRAWING NUMBER: 12034D0-D	

MAG PICKUP 2 PIN CONN	
PIN CODE	PIN FUNCTION
A	+ SIG.
B	- SIG.

DI-MAG PICKUP 3 PIN CONN	
PIN CODE	PIN FUNCTION
A	+ EXC.
B	+ SIG. OUT
C	COMMON

PIN CODE	
PIN	FUNCTION
A	+ EXC.
B	+ SIG.
C	- SIG.
D	- EXC.
E	N/C

UNLESS OTHERWISE SPECIFIED DIM'S ARE IN INCHES  
XX ±.03 XXX ±.01 XXXX ±.005 ANG. ±.5°  
www.hitecsensors.com