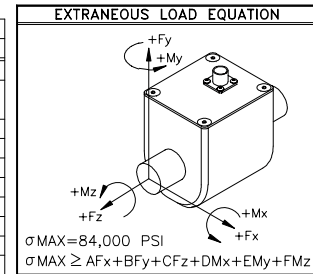


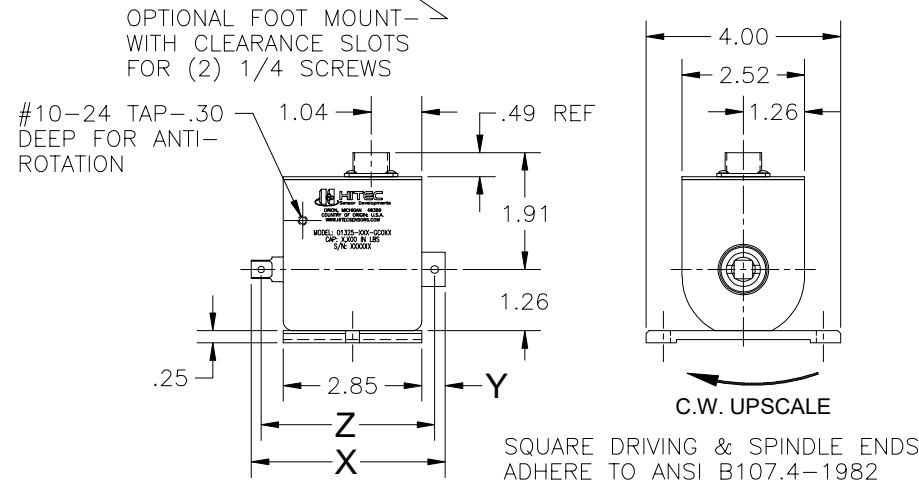
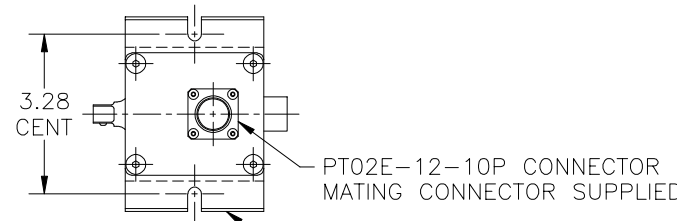
MODEL NO.	CAPACITY	OUTPUT mV/V	EXTRANEIOUS LOAD COEFFICIENTS				TORSIONAL SPRING RATE (IN#/RAD×10 <sup>3</sup> )	X	Y	Z	SIZE
			A&B	C	D&E	F					
01325-051	50 IN#	2.0	2,410	57.1	1,020	854	2.6	3.75	.38	3.5	1/4"
01325-121	125 IN#	2.0	1,130	22.9	409	341	3.0				
01325-022	200 IN#	1.5	489	8.9	187	156	9.0	3.97	.48	3.6	3/8"
01325-062	600 IN#	3.0									
01325-152	1500 IN#	3.0	154	3.8	51.4	42.8	43.8	4.25	.58	3.7	1/2"
01325-242	2400 IN#										

REV	DESCRIPTION	BY	DATE	CHK	ENG	REL	DATE
A	LABEL REVISED	GMC	11-27-17			-	-

PIN	PIN CODE	FUNCTION
A	+5V	
B	SIG. OUT	+0V ± 4.5V NOM.
C	N/C	
D	GND	
E	GND	
F	+5V	
G	CW LEAD	
H	CW TRAIL	
J	N/C	
K	N/C	



ENCODER



**SPECIFICATIONS MODEL: 01325-XXX-GCOXX**  
 CAPACITY \_\_\_\_\_ CHARTED  
 OUTPUT @ F.S. (NOM.) \_\_\_\_\_ 0V±4.5V  
 NON-LINEARITY (%F.S.O.) \_\_\_\_\_ .10  
 HYSTERESIS (%F.S.O.) \_\_\_\_\_ .10  
 BRIDGE RESISTANCE (OHM NOM.) \_\_\_\_\_ 1000  
 OVERLOAD (TORQUE) \_\_\_\_\_ 150% F.S.  
 MAX RPM \_\_\_\_\_ 5,000  
 MAX TEMP RANGE \_\_\_\_\_ -40° TO +185°F  
 POSITION ENCODER:  
 TYPE \_\_\_\_\_ OPTICAL ENCODER  
 RESOLUTION \_\_\_\_\_ 1024 PULSES/REV W/QUADRATURE  
 ASSEMBLY DWG REF: 18988D0-\*  
 \*-INDICATES CURRENT REV

INSTALLATION		CHECKED BY
MODEL: 01325-XXX-GCOXX		PROJ. ENG. -
FINISH	SCALE 1/2	DRAWN BY GMC
MATRL.		DATE 3-12-03
UNLESS OTHERWISE SPECIFIED DIM'S ARE IN INCHES X.X ±.03 X.XX ±.01 X.XXX ±.005 ANG. ±.5°		D.E. REVIEW
		BY DATE
www.hitecsensors.com		DRAWING NUMBER
		19340B0-A