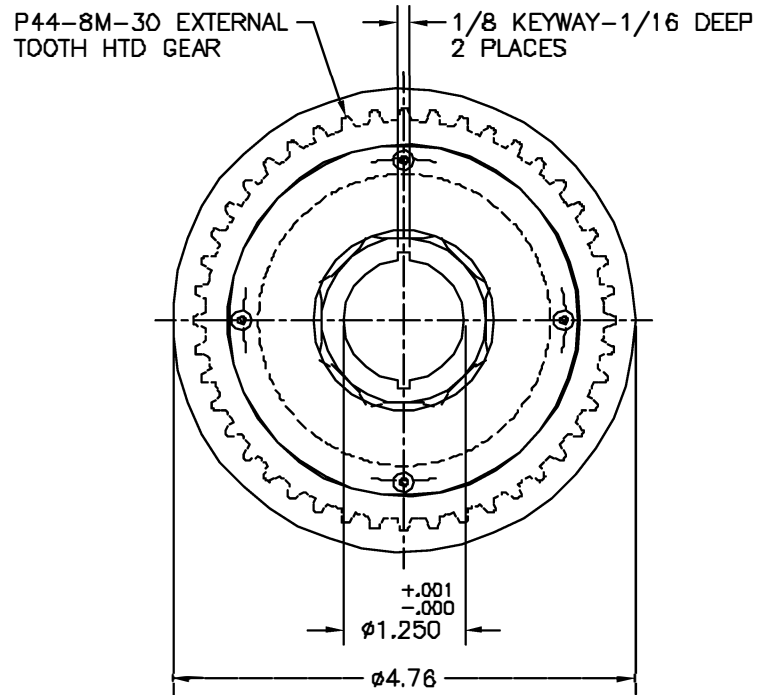
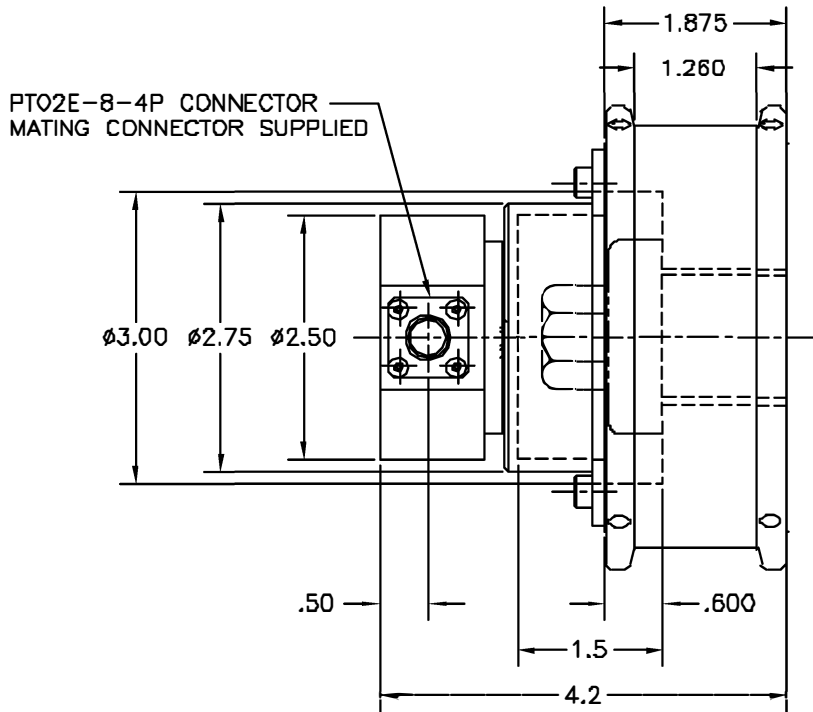


REV	DESCRIPTION	BY	DATE	CHK	ENG	REL DATE
-	REL. FOR PRODUCTION	-	-	-	-	4-24-95



SPECIFICATIONS MODEL: 01034-XXX-FOA00
 CAPACITY (IN. LBS.) F.S. _____ CHARTED
 OUTPUT (mV/V) NOM., F.S. _____ 1.5
 OVERLOAD CAPACITY (%F.S.) _____ 1.5
 BRIDGE RESISTANCE (Ω) _____ 350
 COMPENSATED TEMP RANGE (°F) _____ 30°F TO 170°F

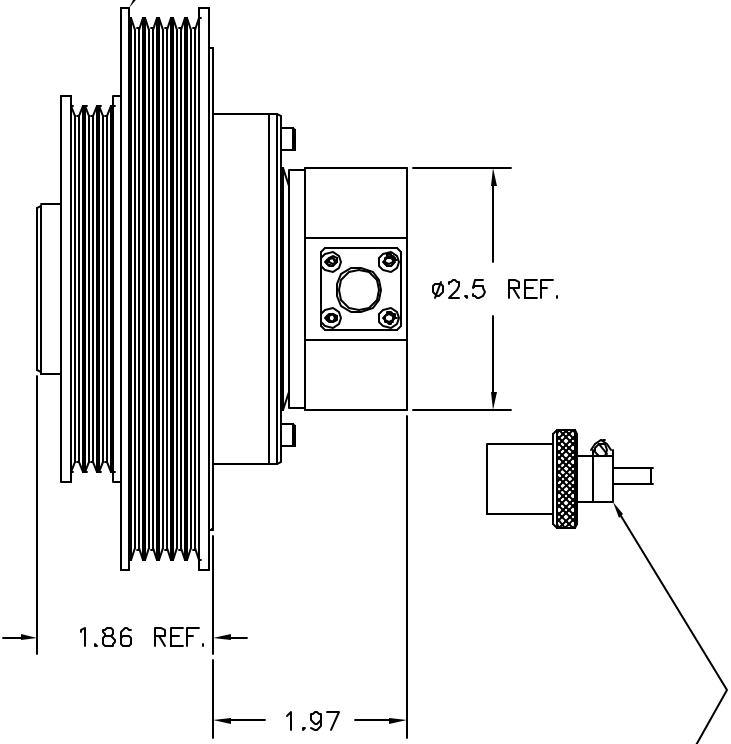
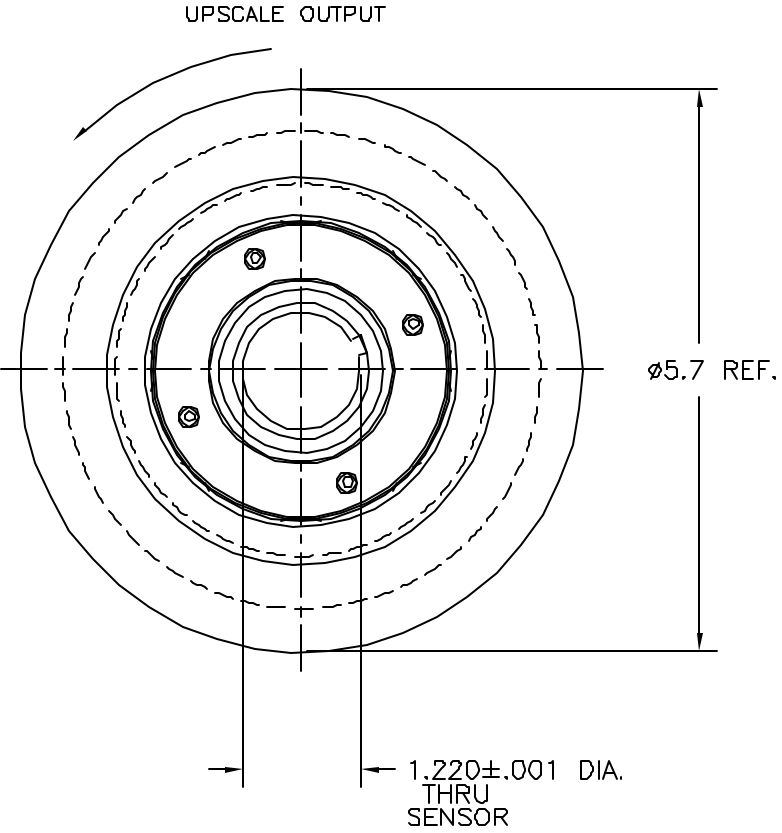
POLARITY: C.W. UPSCALE
ASSEMBLY DWG REF: 16608C0-*
 *-INDICATES CURRENT REV

01034-052	500 IN. LBS.
01034-151	150 IN. LBS.
MODEL NO.	CAPACITY

PIN CODE	
PIN	FUNCTION
A	+ EXC.
B	+ SIG.
C	- SIG.
D	- EXC.

INSTALLATION		CHECKED BY	JMK
MODEL: 01034-XXX-FOA00		PROJ. ENG.	JMK
FINISH	SCALE FULL	DRAWN BY	GMC
MATRL.		DATE	4-21-95
UNLESS OTHERWISE SPECIFIED DIMENSIONS ARE IN INCHES			
XX ±.03		X.XX ±.01 X.XXX ±.005 ANG. ±.5°	
DRAWING NUMBER			16609C0-0

MODEL 01106 TORQUE SENSOR
FUNCTIONALLY EQUIVALENT TO
TOYOTA PULLEY # 13408-74020



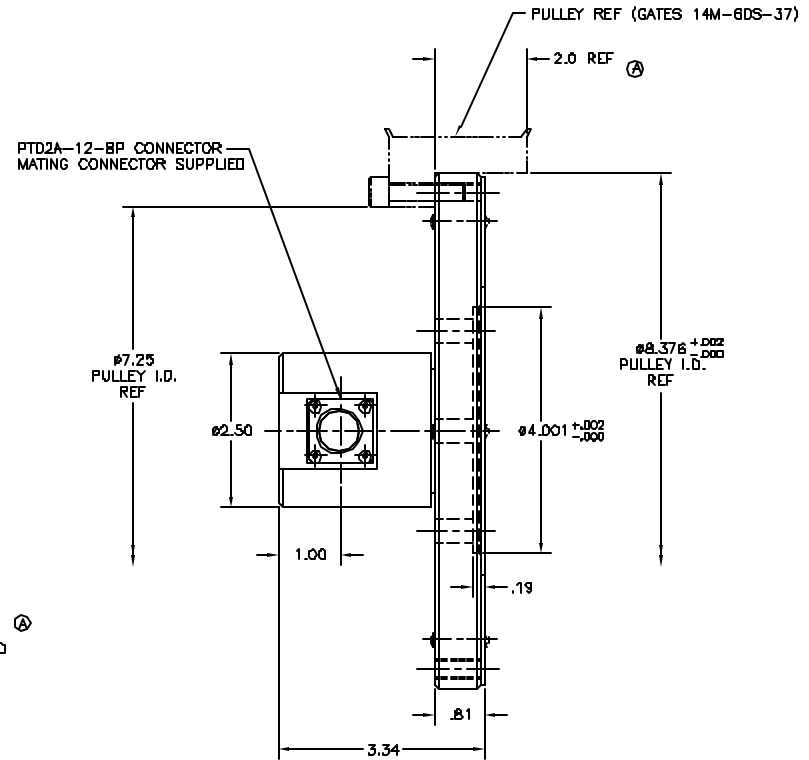
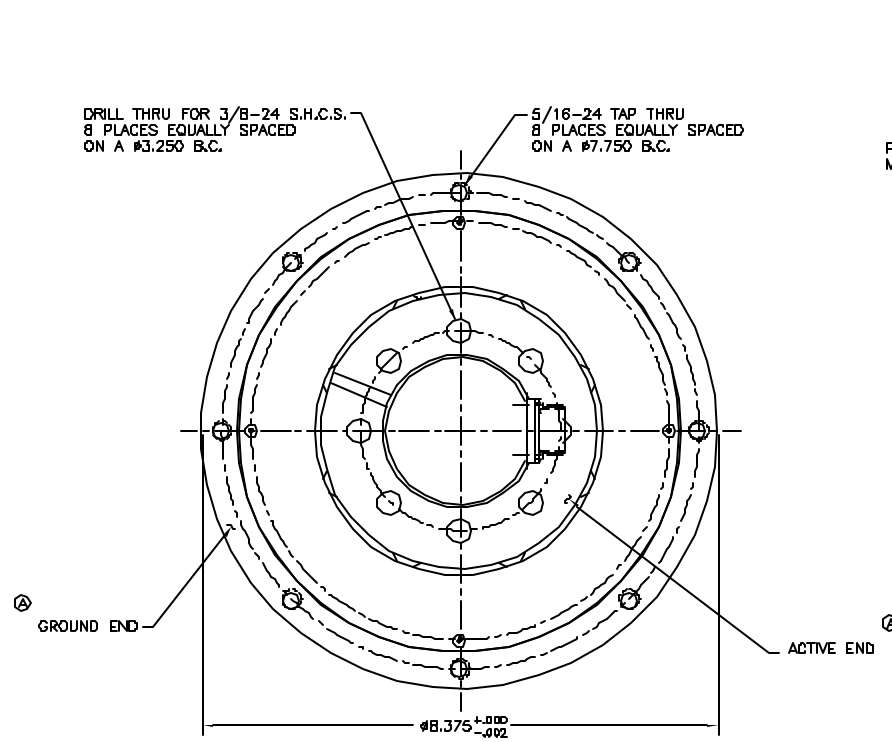
GENERAL SPECIFICATIONS

TORQUE SENSOR MODEL : 01106
CAPACITY 100ft#
OVERLOAD CAPACITY 150ft#
OUTPUT AT FULL SCALE 2mV/V

SLIP RING ASSEMBLY
CIRCUITS 4
MAX RPM RATING 6000
CAPACITY mA 200

INSTALLATION		CHECKED BY	
MODEL : 01106		P.E.	
SCALE FULL	DATE 5-25-89	DRAWN BY MJC	
MATRL.		FINISH	
UNLESS OTHERWISE SPECIFIED DIMENSIONS ARE IN INCHES			
XX ±.03		X.XX ±.01	
X.XXX ±.005		ANG. ±.5°	
DRAWING NUMBER		C-12974	

REV.	DESCRIPTION	BY	DATE	CHK	ENG	REL. DATE
-	REL FOR PRODUCTION	-	-	-	-	1-8-96
A	ADDED 2.0 REF DIM	KKR	8-11-95			
	ADDED NOTES	DC	11-31-97			

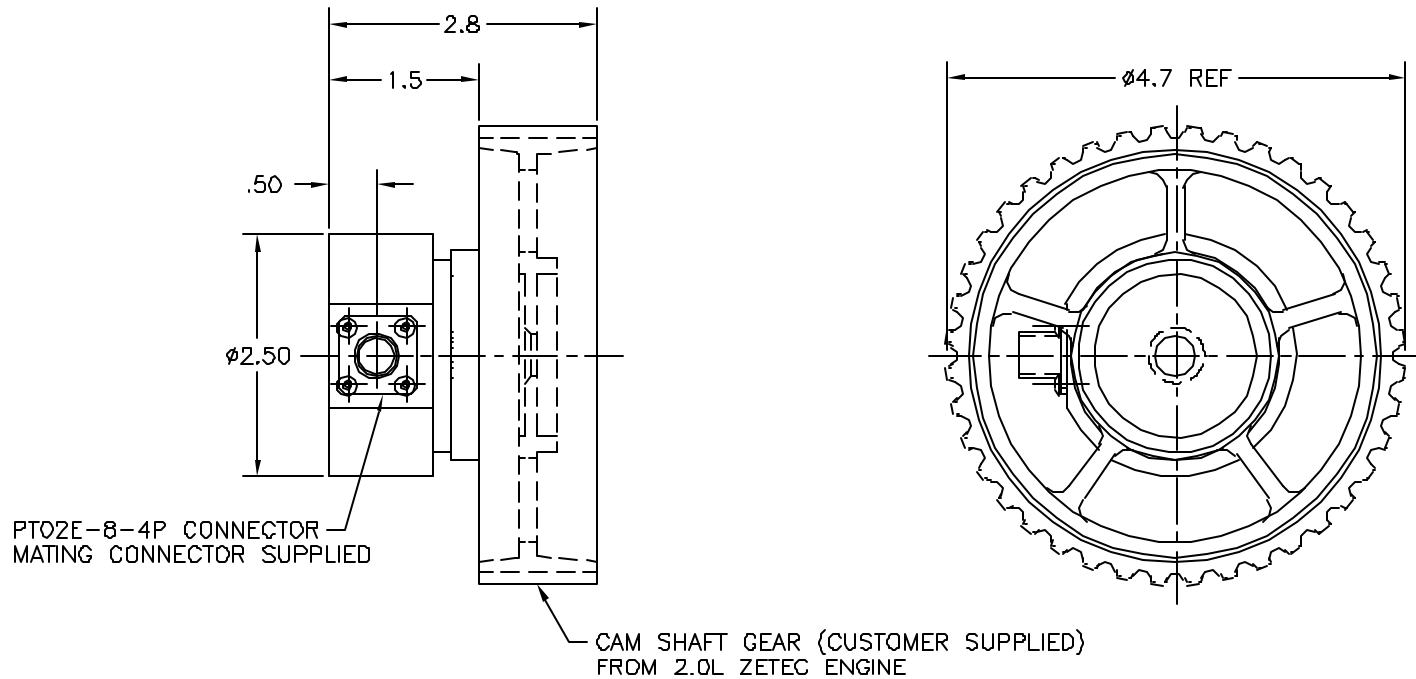


SPECIFICATIONS	MODEL: 0124B-063-E0000
CAPACITY (IN. LBS.) F.S.	6.000
OUTPUT (mV/V) NON. F.S.	2.0
OVERLOAD CAPACITY (%F.S.)	150
BRIDGE RESISTANCE (Ω)	350
COMPENSATED TEMP RANGE (°F)	70 TO 170
ENCODER OUTPUT (PULSES/REV)	60

POLARITY: C.W. UPSCALE
ASSEMBLY DWG REF: 1678BDD-*

PI CONN PIN CODE	FUNCTION	FINISH	SCALE	DATE	DESIGNED BY
A	+ EXC.		FULL	B-11-B5	JMK
B	+ SIG.				JMK
C	- SIG.				GMC
D	- EXC.				
E	N/C				
ENCODER PIN CODE	FUNCTION	UNLESS OTHERWISE SPECIFIED DIMENSIONS ARE IN INCHES			DRAWING NUMBER
F	WHITE +Vcc	X.X ±0.03	X.XX ±0.01	X.XXX ±0.005	1679BDD-A
G	RED V output	ANG. ±.5°			
H	BLACK GROUND				

REV	DESCRIPTION	BY	DATE	CHK	ENG	REL DATE
-	REL. FOR PRODUCTION	-	-	-	-	6-16-98

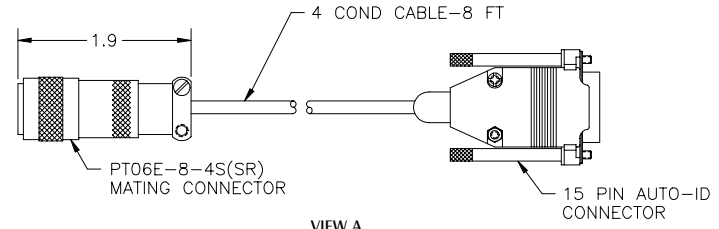


POLARITY: C.W. UPSCALE
ASSEMBLY DWG REF: 17870C0-*
 *-INDICATES CURRENT REV

SPECIFICATIONS	MODEL: 01266-081-F0000
CAPACITY (IN. LBS.) F.S.	80
OUTPUT (mV/V) NOM., F.S.	.4
OVERLOAD CAPACITY (IN. LBS.)	600
BRIDGE RESISTANCE (Ω)	1,750
COMPENSATED TEMP RANGE (°F)	70°F TO 170°F

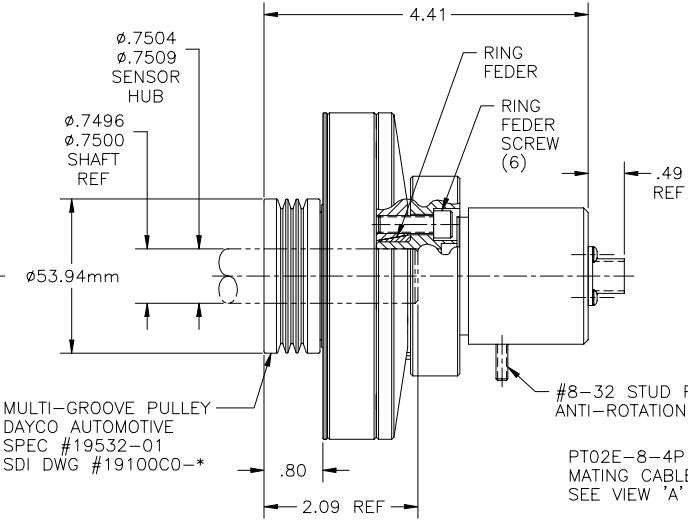
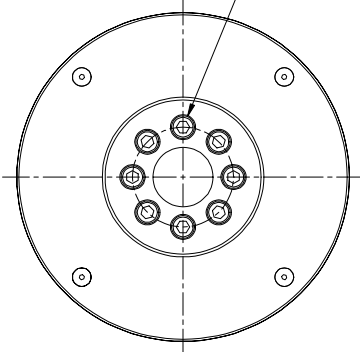
PIN CODE		INSTALLATION		CHECKED BY	
PIN	FUNCTION	MODEL: 01266-081-F0000	SCALE	PROJ. ENG.	D.S.
A	+ EXC.	FINISH	FULL	GMC	
B	+ SIG.	MATRL.		DRAWN BY	GMC
C	- SIG.	UNLESS OTHERWISE SPECIFIED DIM'S ARE IN INCHES XX ±.03 X.XX ±.01 X.XXX ±.005 ANG. ±.5°		DATE	6-3-98
D	- EXC.			D.E. REVIEW	
				BY	DATE
				DRAWING NUMBER	
				17871C0-0	

REV	DESCRIPTION	BY	DATE	CHK	ENG	REL DATE
-	REL. FOR PRODUCTION	-	-	-	-	10-30-01
A	REVISED	GMC	11-8-01			- -

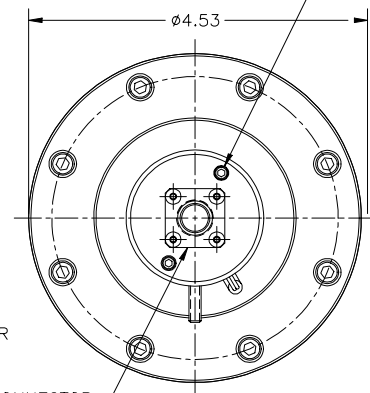


VIEW A

#10-32 S.H.C.S. (8)
SDI SUPPLIED
8 PLACES EQUALLY SPACED
ON A Ø1.375 B.C. REF



ACCESS HOLES FOR
SLIP RING MOUNTING
HOLES-SLIP RING
MUST BE REMOVED
TO ACCESS RING
FEDER SCREWS

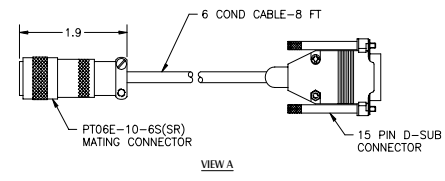
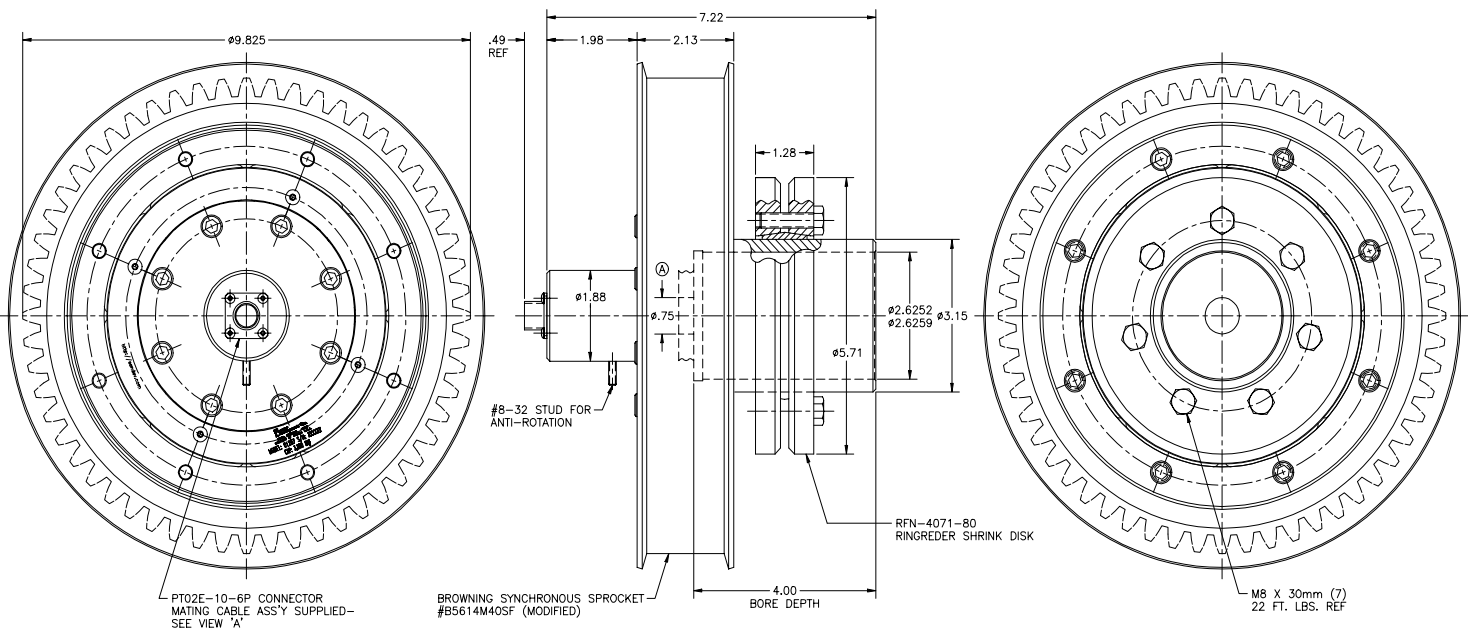


SPECIFICATIONS	MODEL: 01286-121-F0000
CAPACITY (IN. LBS.) F.S.	120
OUTPUT (mV/V) NOM., F.S.	2.0
BRIDGE RESISTANCE (Ω)	350
COMPENSATED TEMP RANGE (°F)	70°F TO 170°F
USEABLE TEMP RANGE (°F)	-65°F TO 250°F

POLARITY: C.W. UPSCALE
ASSEMBLY DWG REF: 19095D0-*
*-INDICATES CURRENT REV

PIN CODE		INSTALLATION		CHECKED BY
PIN	FUNCTION	FINISH	SCALE	D.S.
A	+ EXC.		FULL	D.S.
B	+ SIG.			D.S.
C	- SIG.			GMC
D	- EXC.			
		UNLESS OTHERWISE SPECIFIED DIM'S ARE IN INCHES X.X ±.03 X.XX ±.01 X.XXX ±.005 ANG. ±.5°		DATE
				D.E. REVIEW
				DATE
				DRAWING NUMBER
				19096C0-A

REV	DESCRIPTION	BY	DATE	CHK	ENG	REL DATE
-	REL. FOR PRODUCTION	-	-	-	-	6-20-02
A	Ø.75 ADDED	GMC	7-1-02	-	-	-



SPECIFICATIONS MODEL: 01287-362-D0000

CAPACITY (IN. LBS.) F.S.	3,600
OUTPUT (mV/V) NOM., F.S.	1.8
BRIDGE RESISTANCE (Ω)	350
COMPENSATED TEMP RANGE (°F)	-70°F TO 170°F
USEABLE TEMP RANGE (°F)	-65°F TO 250°F
OVERLOAD CAPACITY (%F.S.)	200
SIDE LOAD CAPACITY (LBS.)	2,000
HYSTERESIS (%F.S.O.)	<.10
NON-LINEARITY (%F.S.O.)	<.10

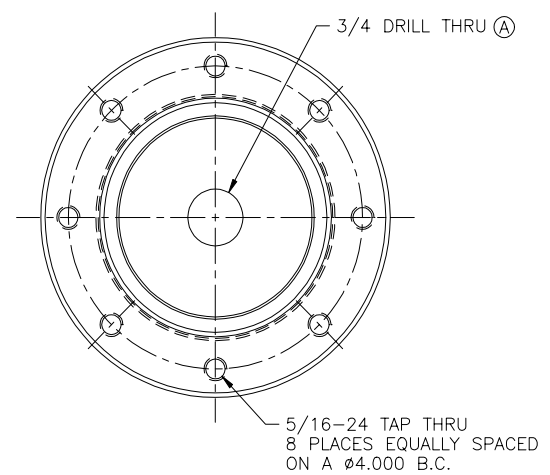
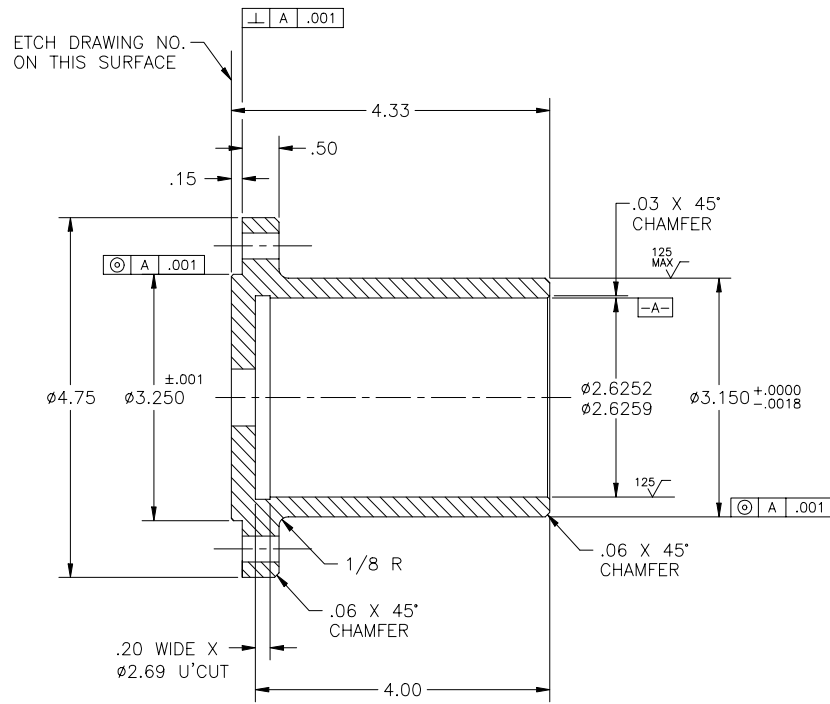
POLARITY: C.W. UPSCALE
 ASSEMBLY DWG REF: 19216D0-*
 *-INDICATES CURRENT REV

PIN CODE		INSTALLATION		CHECKED BY
PIN	FUNCTION	MODEL: 01287-362-D0000	SCALE FULL	D.S.
A	+ EXC			
B	+ SIG			
C	- SIG			
D	- EXC			
E	AUTO ID GND			
F	AUTO ID DATA			

UNLESS OTHERWISE SPECIFIED DIM'S ARE IN INCHES
 X.X 0.03 XXX 0.01 XXXX 0.005 ANG. 0.5°

DRAWING NUMBER: 19217D0-A

REV	DESCRIPTION	BY	DATE	CHK	ENG	REL DATE
-	REL. FOR PRODUCTION	-	-	-	-	6-20-02
A	3/4 DRILL THRU ADDED	GMC	7-1-02			-



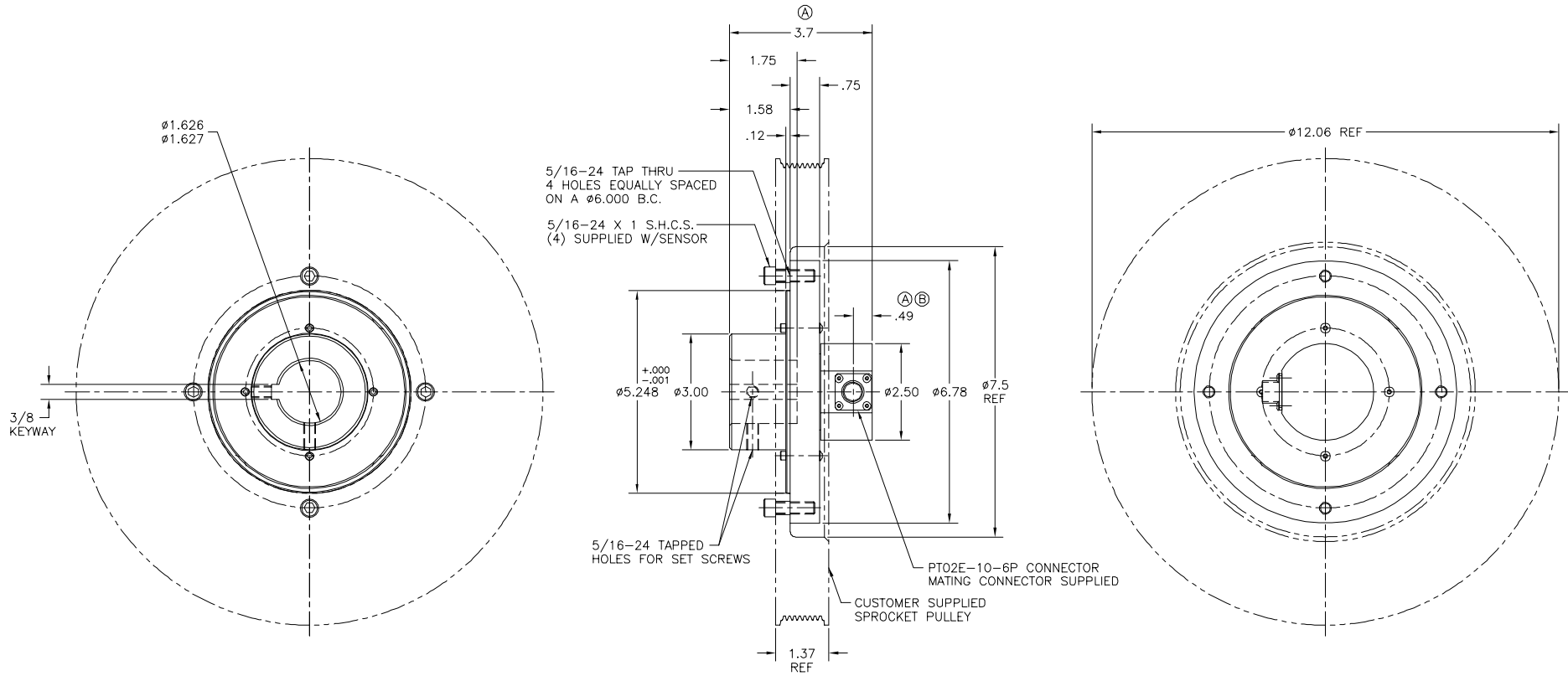
To Be Plotted

NOTE: BREAK SHARP CORNERS-.02 MAX

▭	FLATNESS OF A SURFACE	⊥	PERPENDICULARITY
—	STRAIGHTNESS OF A LINE	//	PARALLELISM
⊙	ROUNDNESS	∠	ANGULARITY
⊙	CYLINDRICITY	⌒	CIRCULAR RUNOUT
⊙	PROFILE OF A SURFACE	⊕	TOTAL RUNOUT
⊙	PROFILE OF A LINE	⊕	TRUE POSITION
≡	SYMMETRY	⊙	CONCENTRICITY

ADAPTER, HUB MODEL: 01287		CHECKED BY D.S.
FINISH BLACK OXIDE		PROJ. ENG. D.S.
SCALE FULL		DRAWN BY GMC
MATL. AISI 4140 Rc 25-35		DATE 6-18-02
UNLESS OTHERWISE SPECIFIED DIM'S ARE IN INCHES		D.E. REVIEW
X.X ±.03 X.XX ±.01 X.XXX ±.005 ANG. ±.5°		BY DATE
		DRAWING NUMBER
		19221C0-A

REV	DESCRIPTION	BY	DATE	CHK	ENG	REL DATE
-	REL. FOR PRODUCTION	-	-	-	-	5-5-09
A	3.7 WAS 3.5; .62 WAS .50; OUTPUT WAS 1.5	GMC	5-11-09	DS	DS	5-11-09
B	1.49 WAS .62	GMC	5-14-09	DS	DS	5-14-09

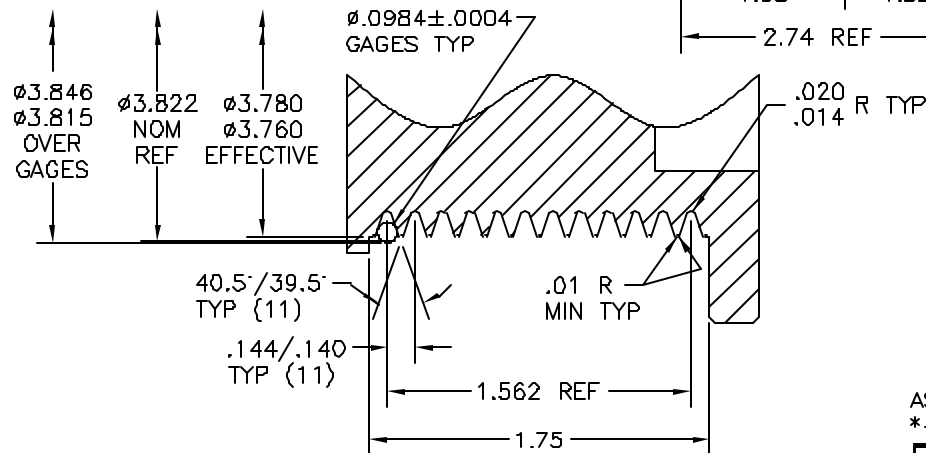
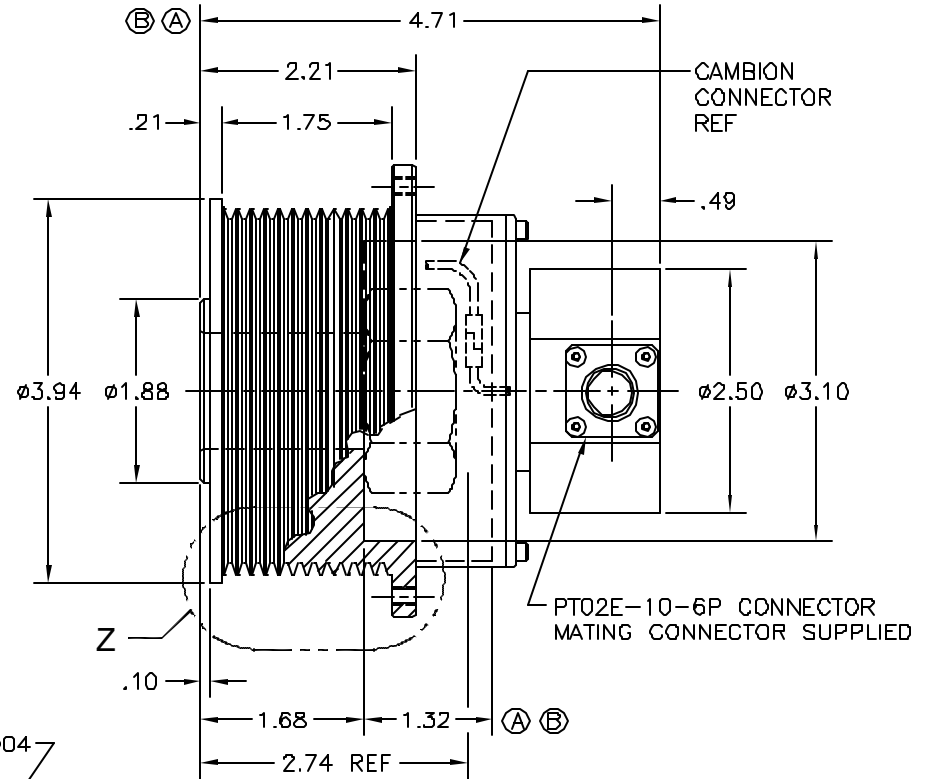
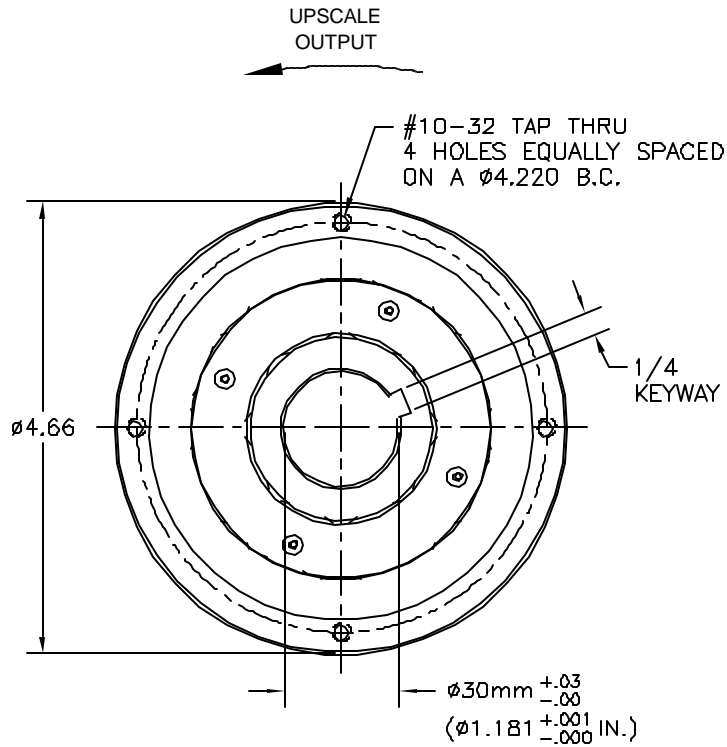


SPECIFICATIONS	MODEL: 01306-013-D0000
CAPACITY (IN. LBS.) F.S.	1,000
OUTPUT (mV/V) NOM., F.S.	2.0
OVERLOAD CAPACITY (%F.S.)	1.5
BRIDGE RESISTANCE (Ω)	700
COMPENSATED TEMP RANGE (°F)	-70°F TO 170°F
USEABLE TEMP RANGE (°F)	-65°F TO +250°F

POLARITY: C.W. UPSCALE
 ASSEMBLY DWG REF: 2040400-*
 PULLEY MODIFICATION REF: 20413B0-*
 *-INDICATES CURRENT REV

PIN CODE		INSTALLATION		CHECKED BY
PIN	FUNCTION	FINISH	SCALE	D.S.
A	+ EXC.		3/4	D.S.
B	+ SIG.			GMC
C	- SIG.			5-5-09
D	- EXC.	UNLESS OTHERWISE SPECIFIED DIM'S ARE IN INCHES		D.E. REVIEW
E	N/C	X.X ±.03 X.XX ±.01 X.XXX ±.005 ANG. ±.5		BY DATE
F	N/C	DRAWING NUMBER		20405D0-B

REV	DESCRIPTION	BY	DATE	CHK	ENG	REL DATE
-	REL. FOR PRODUCTION	-	-	-	-	3-31-10
A	4.59 WAS 4.93; 1.20 WAS 1.54	GMC	4-8-10	DS	DS	4-8-10
B	4.71 WAS 4.59; 1.32 WAS 1.20	GMC	4-15-10	DS	DS	4-15-10



VIEW Z
SCALE: 2X

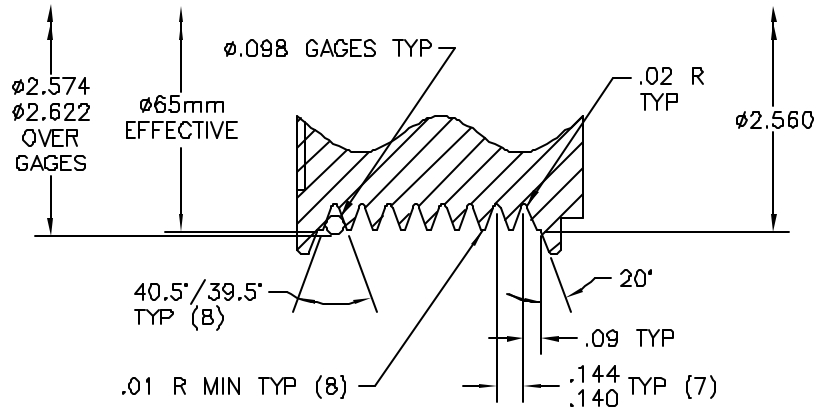
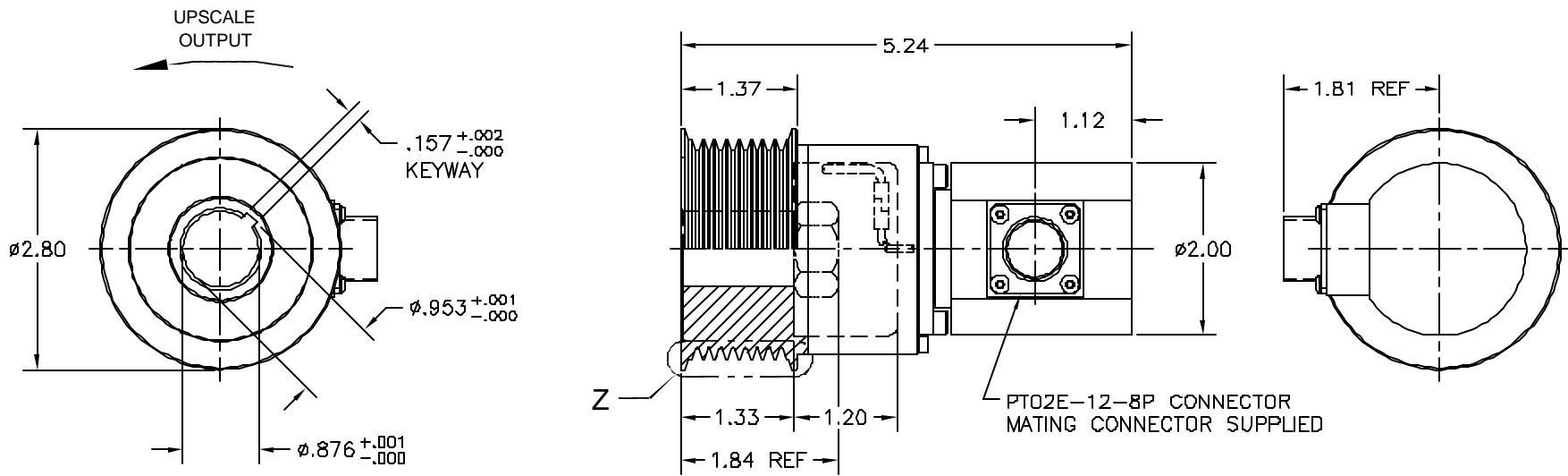
ASSEMBLY DWG REF: 20525C0-*
*-INDICATES CURRENT REV

SPECIFICATIONS	MODEL: 01309-881-D0000
CAPACITY F.S.	100 Nm (885 IN. LBS.)
OUTPUT (mV/V) NOM., F.S.	1.5
OVERLOAD CAPACITY (%F.S.)	1.5
BRIDGE RESISTANCE (Ω)	350
COMPENSATED TEMP RANGE (°F)	70°F TO 170°F
USEABLE TEMP RANGE (°F)	-65°F TO +250°F
MAX RPM	10,000

PIN CODE	
PIN	FUNCTION
A	+ EXC.
B	+ SIG.
C	- SIG.
D	- EXC.
E	N/C
F	N/C

INSTALLATION		CHECKED BY	D.S.
MODEL: 01309-881-D0000		PROJ. ENG.	D.S.
FINISH	SCALE FULL	DRAWN BY	GMC
MATRL.		DATE	3-28-10
UNLESS OTHERWISE SPECIFIED DIM'S ARE IN INCHES XX $\pm .03$ X.XX $\pm .01$ X.XXX $\pm .005$ ANG. $\pm .5^\circ$		D.E. REVIEW	
		BY	DATE
		DRAWING NUMBER	
		20526C0-B	

REV	DESCRIPTION	BY	DATE	CHK	ENG	REL DATE
-	REL. FOR PRODUCTION	-	-	-	-	-



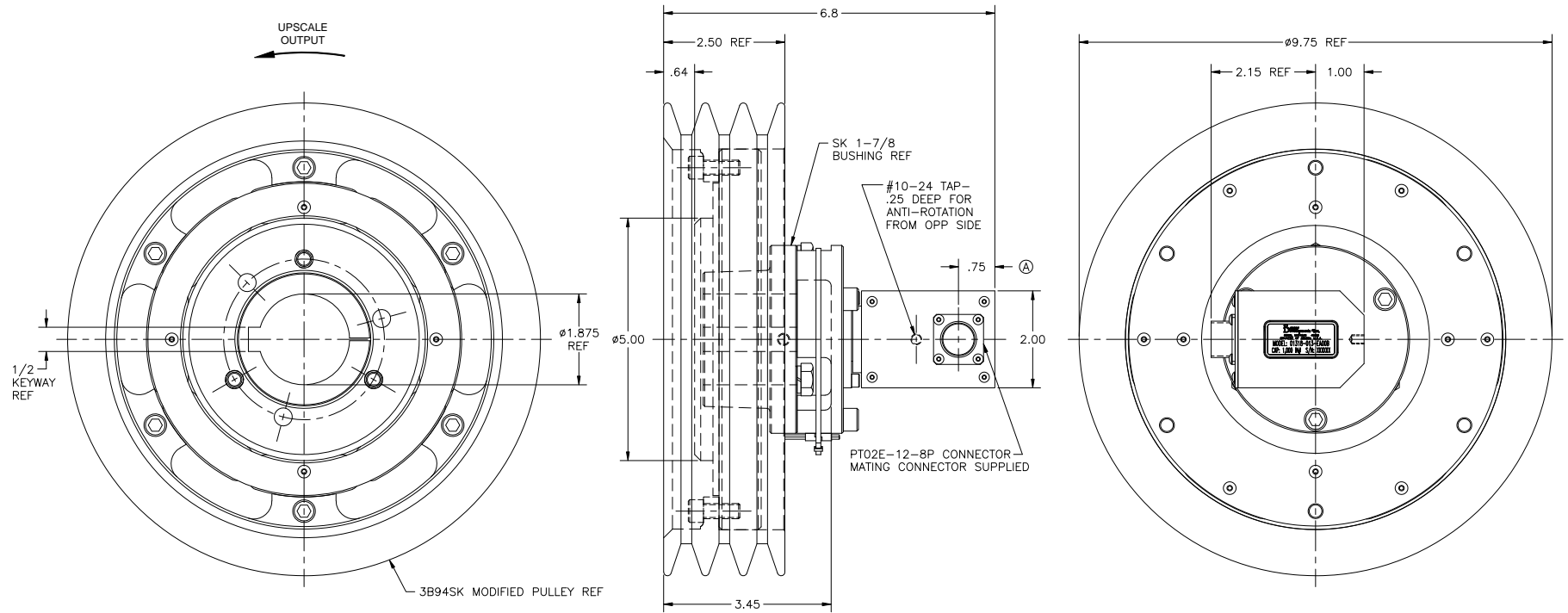
VIEW Z
SCALE: 2X

SPECIFICATIONS	MODEL: 01314-022-E0000
CAPACITY F.S.	22 Nm (200 IN. LBS.)
OUTPUT (mV/V) NOM., F.S.	1.0
OVERLOAD CAPACITY (%F.S.)	1.5
BRIDGE RESISTANCE (Ω)	700
COMPENSATED TEMP RANGE (°F)	70°F TO 170°F
USEABLE TEMP RANGE (°F)	-65°F TO +250°F
MAX RPM	10,000
ENCODER	60 PPR

ENCODER	PIN CODE	
	PIN	FUNCTION
	A	+ EXC.
	B	+ SIG.
	C	- SIG.
	D	- EXC.
	E	+5 TO +15 VDC
	F	SIG OUT
	G	GND
	H	N/C

ASSEMBLY DWG REF: 20672C0-*		*—INDICATES CURRENT REV	
INSTALLATION		CHECKED BY	
MODEL: 01314-022-E0000		PROJ. ENG.	
FINISH	SCALE FULL	DRAWN BY GMC	
MATRL.		DATE 12-16-10	
UNLESS OTHERWISE SPECIFIED DIM'S ARE IN INCHES		D.E. REVIEW	
XX ±.03 XXX ±.01 XXXX ±.005 ANG. ±.5'		BY DATE	
		DRAWING NUMBER	
		20673C0-0	

REV	DESCRIPTION	BY	DATE	CHK	ENG	REL	DATE
-	REL FOR PRODUCTION	-	-	-	-	-	4-29-11
A	1.75 WAS 1.62	GMC	7-1-11				-

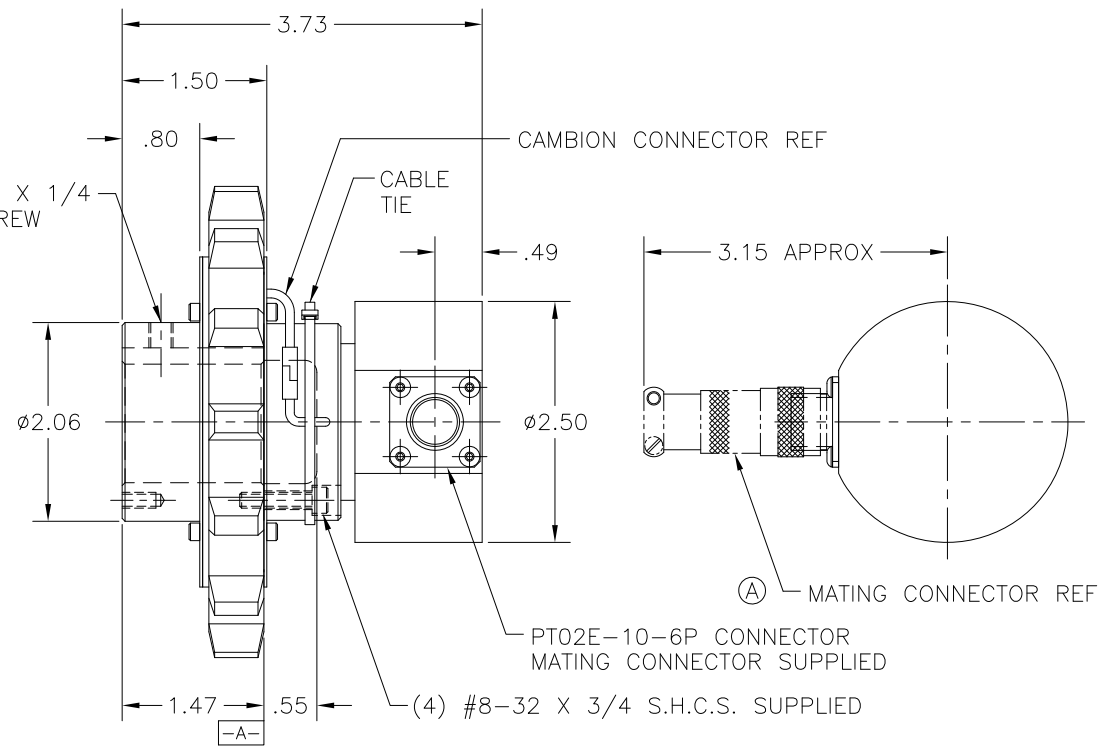
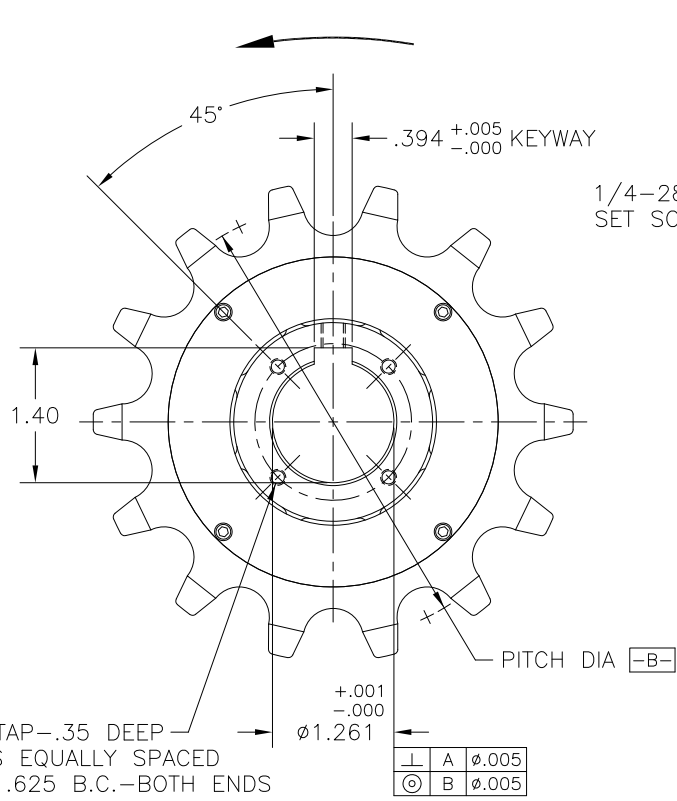


SPECIFICATIONS	MODEL: 01318-013-EA00B
CAPACITY F.S. (IN. LBS.)	1,000
OUTPUT @ F.S. (NOM.)	0V±10V
OVERLOAD CAPACITY (IN. LBS.)	4,000
BRIDGE RESISTANCE (Ω)	700
COMPENSATED TEMP RANGE (°F)	70°F TO 170°F
USEABLE TEMP RANGE (°F)	-65°F TO +250°F
MAX RPM	2,000
ENCODER	60 PPR

PIN CODE		ASSEMBLY DWG REF: 20739D0-*	
PIN	FUNCTION	*-INDICATES CURRENT REV	
A	+11 - 15V	INSTALLATION	CHECKED BY D.S.
B	GND		
C	SIG. OUT	MODEL: 01318-013-EA00B	PROJ. ENG. D.S.
D	+0V ± 10V NOM.		
E	GND	FINISH	SCALE FULL
F	+5 TO +15 VDC	MATL.	DATE 4-19-11
G	SIG. OUT	UNLESS OTHERWISE SPECIFIED DIM'S ARE IN INCHES	
H	GND	X.X ±.03 X.XX ±.01 X.XXX ±.005 ANG. ±.5°	
	N/C	BY DATE	
		DRAWING NUMBER	
		20740D0-A	

	FLATNESS OF A SURFACE		PERPENDICULARITY
	STRAIGHTNESS OF A LINE		PARALLELISM
	ROUNDNESS		ANGULARITY
	CYLINDRICITY		CIRCULAR RUNOUT
	PROFILE OF A SURFACE		TOTAL RUNOUT
	PROFILE OF A LINE		TRUE POSITION
	SYMMETRY		CONCENTRICITY

REV	DESCRIPTION	BY	DATE	CHK	ENG	REL DATE
-	REL. FOR PRODUCTION	-	-	-	-	5-4-12
A	END VIEW ADDED	GMC	5-7-12	-	-	- -



O.D.: 4.98
PITCH: 1.0
NO. OF TEETH: 14
THICKNESS: .535/.575
FOR USE WITH
ANSI 80 SINGLE
STRANDED ROLLER
CHAIN

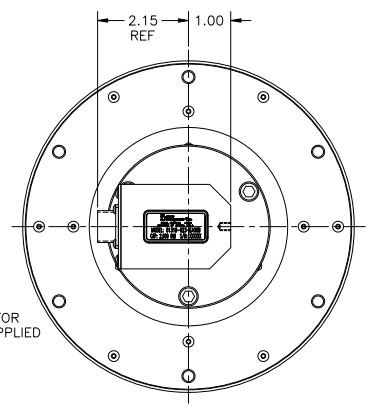
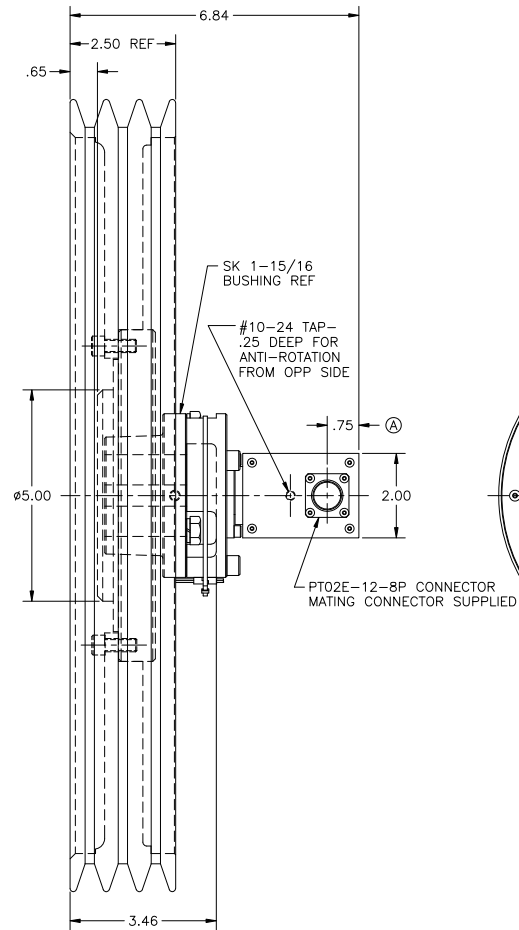
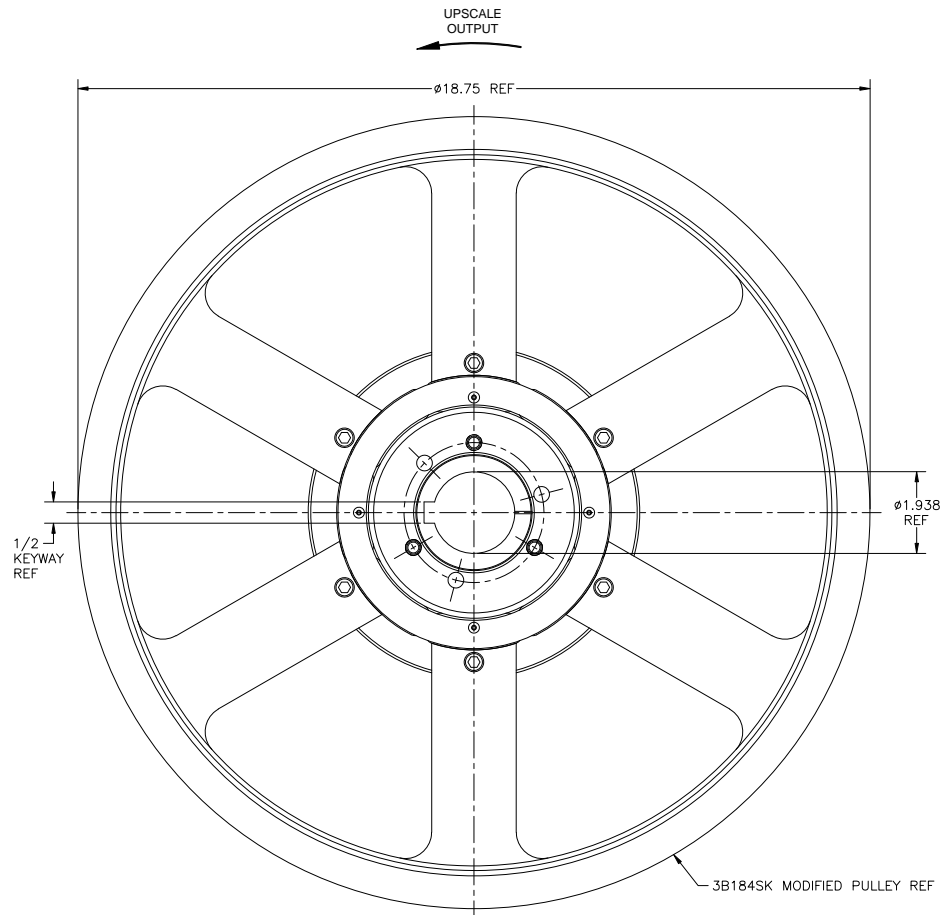
ASSEMBLY DWG REF: 20991C0-*
*-INDICATES CURRENT REV

SPECIFICATIONS	MODEL: 01333-352-D0000
CAPACITY F.S.	3,500 IN. LBS.
OUTPUT (mV/V) NOM., F.S.	1.5
OVERLOAD CAPACITY (%F.S.)	150
BRIDGE RESISTANCE (Ω)	350
COMPENSATED TEMP RANGE ($^{\circ}$ F)	70 $^{\circ}$ F TO 170 $^{\circ}$ F
USEABLE TEMP RANGE ($^{\circ}$ F)	-65 $^{\circ}$ F TO +250 $^{\circ}$ F
MAX RPM	2,000

PIN CODE	
PIN	FUNCTION
A	+ EXC.
B	+ SIG.
C	- SIG.
D	- EXC.
E	N/C
F	N/C

INSTALLATION		CHECKED BY	D.S.
MODEL: 01333-352-D0000		PROJ. ENG.	D.S.
FINISH	SCALE FULL	DRAWN BY	GMC
MATRL.		DATE	5-3-12
UNLESS OTHERWISE SPECIFIED DIM'S ARE IN INCHES X.X \pm .03 X.XX \pm .01 X.XXX \pm .005 ANG. \pm .5 $^{\circ}$		D.E. REVIEW	
		BY	DATE
		DRAWING NUMBER	
		20992C0-A	

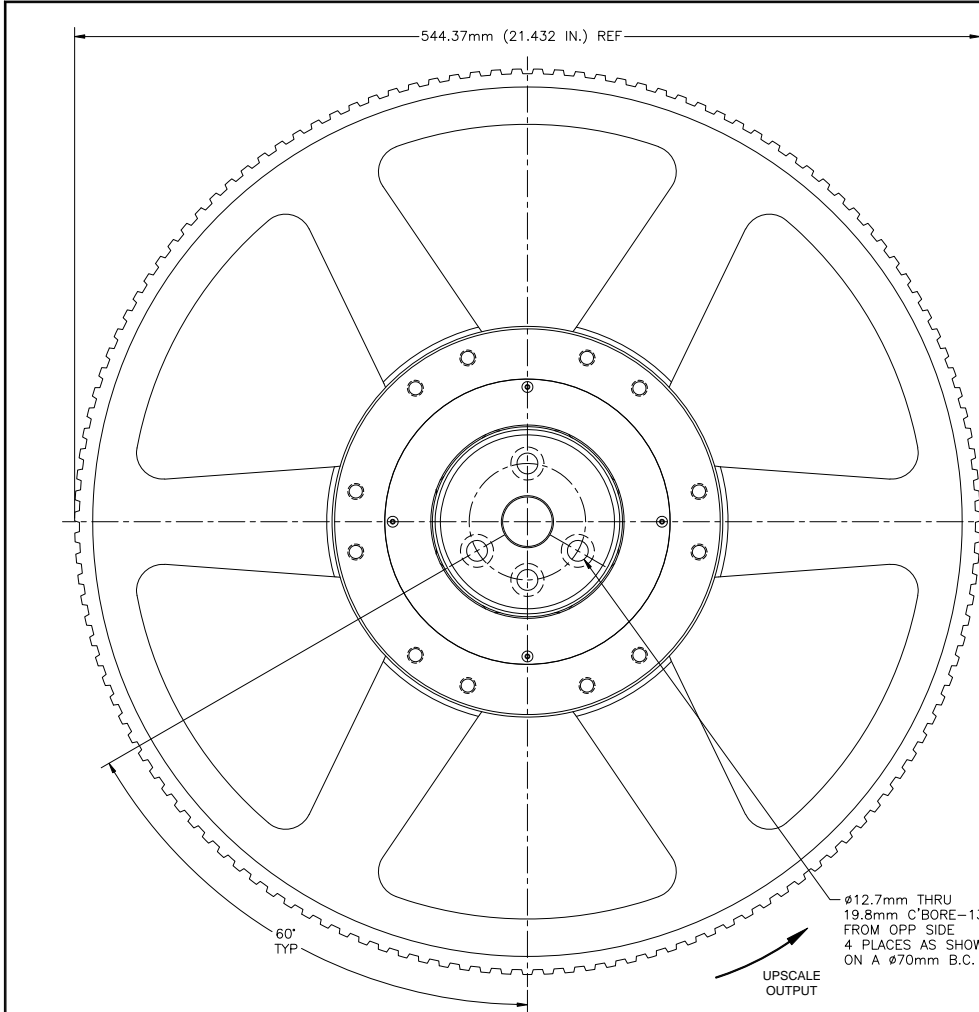
REV	DESCRIPTION	BY	DATE	CHK	ENG	REL DATE
-	REL. FOR PRODUCTION	-	-	-	-	4-29-11
A	1.75 WAS 1.62	GMC	7-1-11	-	-	-



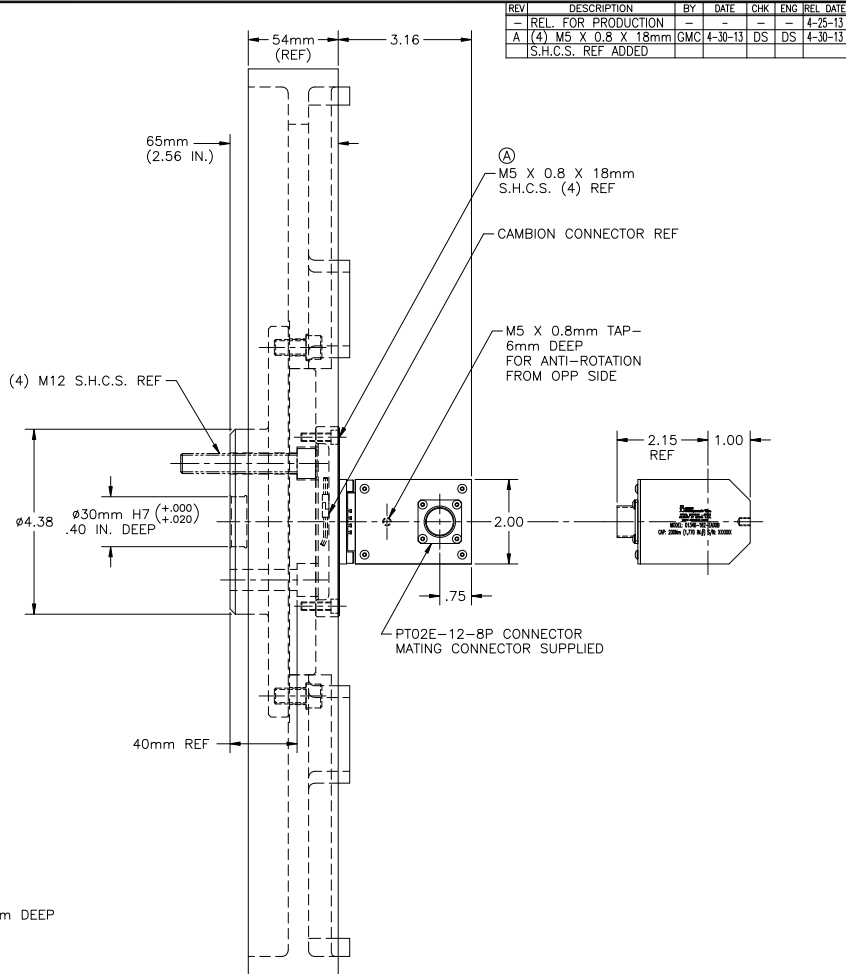
VIEW SHOWN W/O PULLEY

SPECIFICATIONS	MODEL: 01319-023-EA00B
CAPACITY F.S. (IN. LBS.)	2,000
OUTPUT @ F.S. (NOM.)	0V±10V
OVERLOAD CAPACITY (IN. LBS.)	4,000
BRIDGE RESISTANCE (Ω)	700
COMPENSATED TEMP RANGE (°F)	-70°F TO 170°F
USEABLE TEMP RANGE (°F)	-65°F TO +250°F
MAX RPM	2,000
ENCODER	60 PPR

PIN CODE		ASSEMBLY DWG REF: 20749D0-*	
PIN	FUNCTION	*-INDICATES CURRENT REV	
A	+11 - 15V	INSTALLATION	CHECKED BY D.S.
B	GND		PROJ. ENG. D.S.
C	SIG. OUT	MODEL: 01319-023-EA00B	DRAWN BY GMC
D	+0V ± 10V NOM.	FINISH	SCALE 3/4
E	GND	MATRL.	DATE 4-28-11
F	+5 TO +15 VDC	UNLESS OTHERWISE SPECIFIED DIM'S ARE IN INCHES	
G	SIG. OUT	X.X ±.03 X.XX ±.01 X.XXX ±.005 ANG. ±.5°	
H	GND	BY	D.E. REVIEW
	N/C	DATE	
		DRAWING NUMBER	
		20750D0-A	



SPECIFICATIONS		MODEL: 01346-182-EA00B
CAPACITY F.S.	200 Nm (1,770 IN. LBS.)	
OUTPUT @ F.S. (NOM.)	0V±10V	
OVERLOAD CAPACITY	400 Nm	
BRIDGE RESISTANCE (Ω)	700	
COMPENSATED TEMP RANGE (°F)	70°F TO 170°F	
USEABLE TEMP RANGE (°F)	-65°F TO +250°F	
MAX RPM	700	
ENCODER	60 PPR	



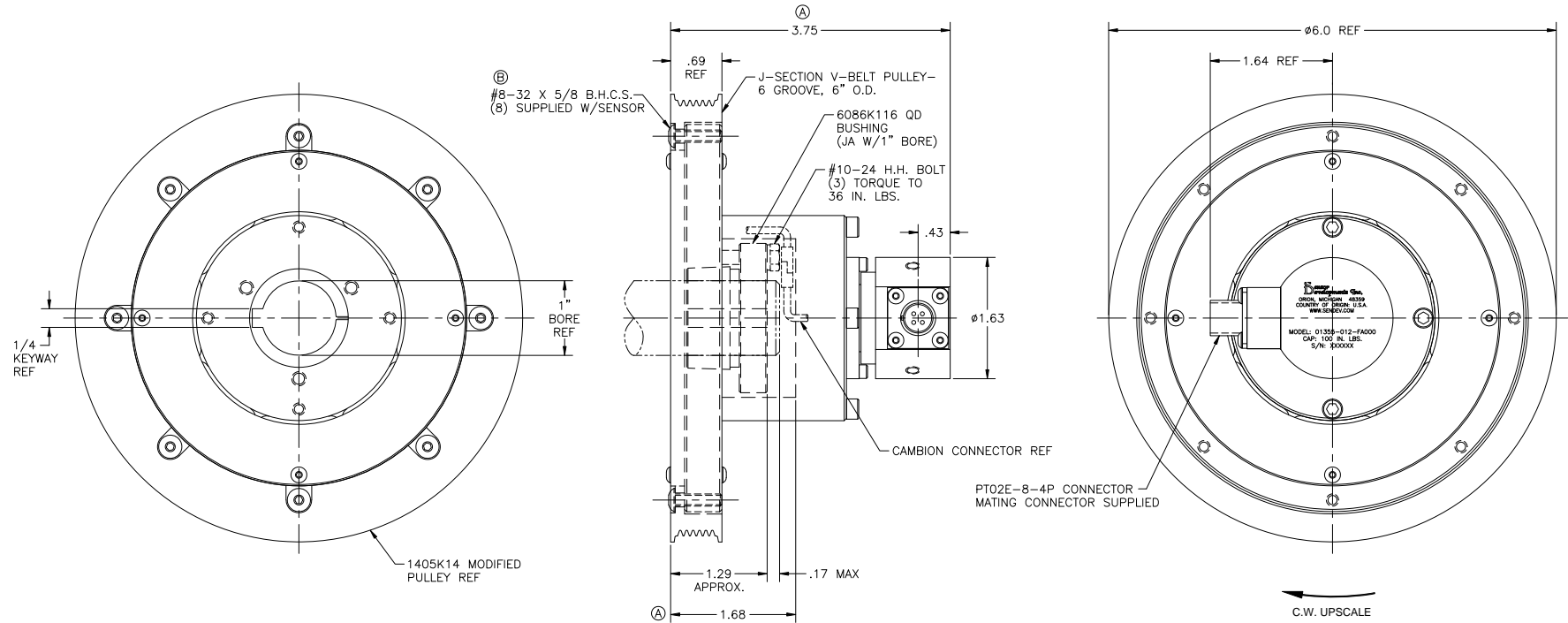
REV	DESCRIPTION	BY	DATE	CHK	ENG	REL DATE
-	REL FOR PRODUCTION	-	-	-	-	4-25-13
A	(4) M5 X 0.8 X 18mm S.H.C.S. REF ADDED	GMC	4-30-13	DS	DS	4-30-13

PIN CODE	
PIN	FUNCTION
A	+11 - 15V
B	GND
C	SIG. OUT
D	+0V ± 10V NOM.
E	GND
F	+5 TO +15 VDC
G	SIG. OUT
H	GND
	N/C

ASSEMBLY DWG REF: 21203D0-*		* - INDICATES CURRENT REV	
INSTALLATION		CHECKED BY D.S.	
MODEL: 01346-182-EA00B		PROJ. ENG. D.S.	
FINISH	SCALE 3/4	DRAWN BY GMC	
MTRL.		DATE 4-15-13	
UNLESS OTHERWISE SPECIFIED DIM'S ARE IN INCHES		D.E. REVIEW	
X.X ±.03 X.XX ±.01 X.XXX ±.005 ANG. ±.5		BY DATE	
DRAWING NUMBER		21204D0-A	

EXC VOLTAGE -
TORQUE -
ENCODER -

REV	DESCRIPTION	BY	DATE	CHK	ENG	REL	DATE
-	REL FOR PRODUCTION	-	-	-	-	-	11-18-14
A	3.75 WAS 4.40; 1.68 WAS 2.33	GMC	11-21-14	DS	DS	DS	11-21-14
B	(8) #8-32 B.H.C.S. WAS	GMC	11-24-14	DS	DS	DS	11-24-14
(4)	#8-32 S.H.C.S.						



SPECIFICATIONS	MODEL: 01355-012-FA000
CAPACITY F.S. (IN. LBS.)	100
OUTPUT @ F.S. (NOM.)	4-20mA
OVERLOAD CAPACITY	150% F.S.
BRIDGE RESISTANCE (Ω)	350
COMPENSATED TEMP RANGE ($^{\circ}$ F)	70 $^{\circ}$ F TO 170 $^{\circ}$ F
USEABLE TEMP RANGE ($^{\circ}$ F)	-40 $^{\circ}$ F TO +185 $^{\circ}$ F
MAX RPM	10,000

ASSEMBLY DWG REF: 2145400-*
 *-INDICATES CURRENT REV

PIN CODE		INSTALLATION		CHECKED BY	D.S.
PIN	FUNCTION	FINISH	SCALE	PROJ. ENG.	D.S.
A	+12 TO 24VDC		1.5X	DRAWN BY	GMC
B	CURRENT SOURCE	MATL.		DATE	11-18-14
C	CURRENT SINK	UNLESS OTHERWISE SPECIFIED DIM'S ARE IN INCHES			
D	GND	X.X ±.03 X.XX ±.01 X.XXX ±.005 ANG. ±.5			
				BY	D.E. REVIEW
				DATE	
				DRAWING NUMBER	21455D0-B