

PEDAL FORCE SENSOR

The 10118 Pedal Force sensor is used to evaluate the force requirements of new and existing brake systems.

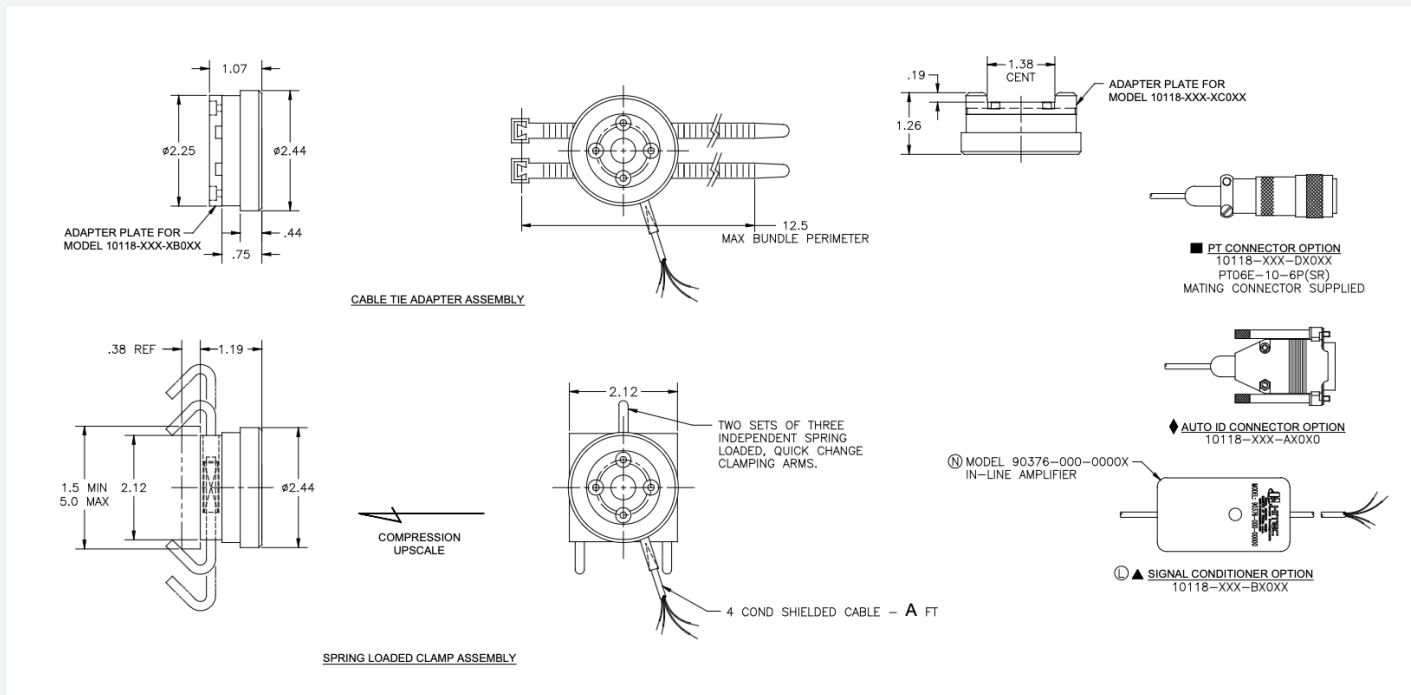
The transducer adapts to pedals in automobiles, trucks, buses, or material handling equipment. It mounts directly to the pedal with spring-loaded, quick-change clamping arms or cable ties for easy installation. The sensor is available in capacities ranging from 25 to 400 lbs. The required capacity needs to be specified at time of order.



FEATURES

- For evaluation of force requirements of new and existing braking systems
- Capacities from 25 - 400 lbs
- Temperature compensated
- Quick and easy installation

DIAGRAM



To find out more visit hitecsensors.com

HDS_01227_112420/01

Copyright © HITEC Sensors 2025. This flyer is indicative only. Contact HITEC directly for details.

 **HITECSENSORS**
A HUMANETICS COMPANY

PEDAL FORCE SENSOR

SPECIFICATION

PARAMETER	RANGE
Capacities (lbs)	25 to 400
Overload capacity (%)	Based on capacity
Output at full scale load (mV/V)	2.0 nominal
Non-linearity (%)	0.20 of FS
Hysteresis (%)	0.20 of FS
Zero balance (%)	1.00 of FS
Compensated temperature (°F)	70 to 170
Useable temperature (°F)	-65 to +250
Temperature effect on zero (%)	0.002 of FS/°F
Temperature effect on span (%)	0.002 of Rdg/°F
Bridge resistance (Ohms)	700
Excitation voltage, maximum (Vdc)	20

HITEC Sensor Developments, Inc. | 10 Elizabeth Drive
Chelmsford, MA 01824 | United States of America
T +1 978 742 9032 | F +1 978 742 9033

hitecsensors.com