

SOCKET REACTION TORQUE SENSOR

These strain gage-based sensors (01190) are designed for static and limited rotation torque measurement applications, such as drive socket systems, calibration of hand and click wrenches, and checking applied torque values.

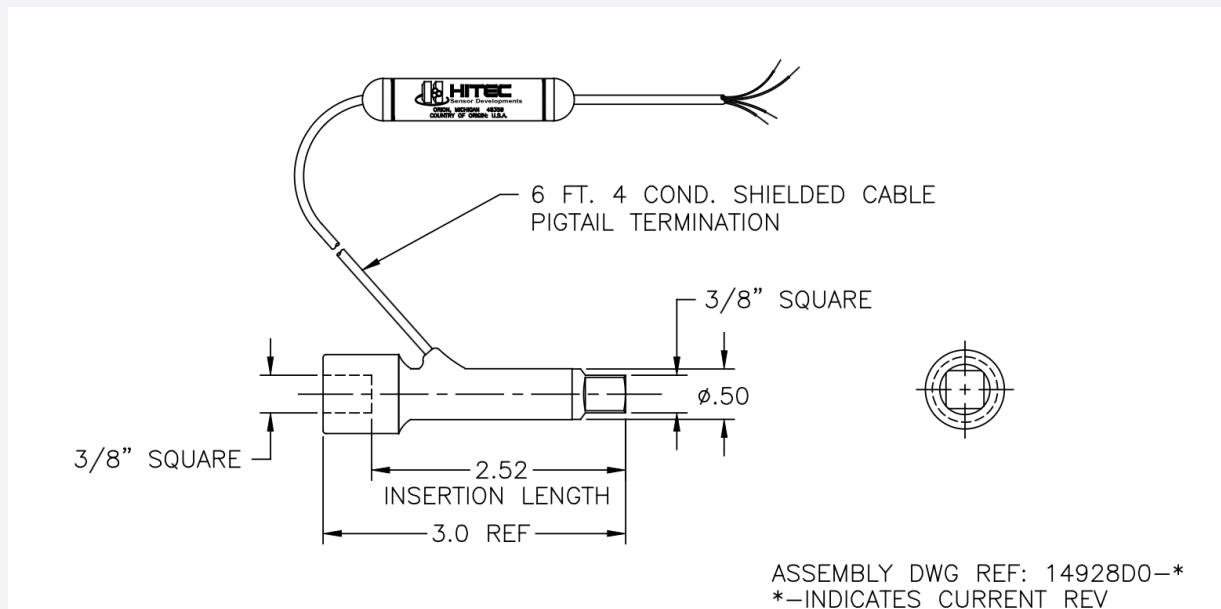
They are available in ten wide ranging capacities. All use a full, four-arm Wheatstone Bridge circuit and have an elastomer coating to protect against mechanical damage. SDI's Auto-ID connector is optional.



FEATURES

- Designed for static and limited rotation torque measurement applications
- Capacities from 25 - 84,000 in-lbs
- Temperature compensated
- Alloy steel construction
- Auto-ID available

DIAGRAM



To find out more visit hitecsensors.com

HDS_01227_112420/01

Copyright © HITEC Sensors 2025. This flyer is indicative only. Contact HITEC directly for details.

 **HITECSENSORS**
A HUMANETICS COMPANY

SOCKET REACTION TORQUE SENSOR

SPECIFICATION

PARAMETER	RANGE
Capacities (ft.lb)	25 to 7,000
Overload capacity (%)	150 of FS
Output at FS (mV/V)	2.0 Nominal
Non-linearity (%)	0.20 of FS
Hysteresis (%)	0.20 of FS
Zero balance (%)	1.00 of FS
Compensated temperature (°F)	70 to 170
Useable temperature (°F)	-65 to +250
Temperature effect on zero (%)	0.002 of FS/°F
Temperature effect on span (%)	0.002 of Rdg/°F
Bridge resistance (Ohms)	1000
Excitation voltage, maximum (Vdc)	20
Material	Alloy Steel

HITEC Sensor Developments, Inc. | 10 Elizabeth Drive
Chelmsford, MA 01824 | United States of America
T +1 978 742 9032 | F +1 978 742 9033

hitecsensors.com